



Just add water.

On the 2-acre site of Canada's former interior design mecca rises **Art Shoppe Lofts + Condos** from Freed and Capital Developments with Karl Lagerfeld.

TimForbes_ArtShoppe_Cloud

TimForbes_ArtShoppe_Cloud

WWW.TIMFORBES.ART

STUDIO @ TIMFORBESARTIST.COM

416-801-1909



ARTIST CONCEPT

Cloud

In collaboration with Janet Rosenberg & Studio, a 2.75m porcelain-white, sculpture [CLOUD] has been created by Canadian artist Tim Forbes to float in a 4.5m sq. water feature overlooking Toronto's skyline at the intersection of art, fashion and lifestyle.

Client & Associates:
 Art Shoppe Lofts + Condos
 Freed Developments
 Capital Developments
 architectsAlliance
 Karl Lagerfeld
 Cecconi Simone Design

Janet Rosenberg & Studio
 Tim Forbes Artist

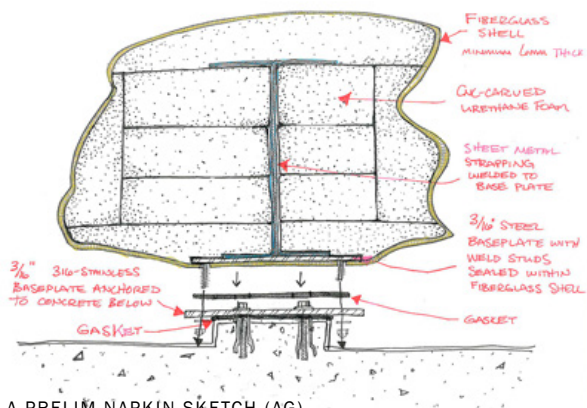
Toronto Canada 2021
 BILD Awards Project of the Year 2016

Tim Forbes/ForbesDG
 Fabrication team:
 Astound Group Architectural Fabrication
 Site photography: Richard Koegl
 Photography: Tim Forbes, Joseph Kondrat

The site brief from premiere landscape architects Janet Rosenberg & Studios requested a signature work to stylistically harmonize with the ambient design elements of the 13th floor rooftop – a unique art focus for lofty terrace gatherings.

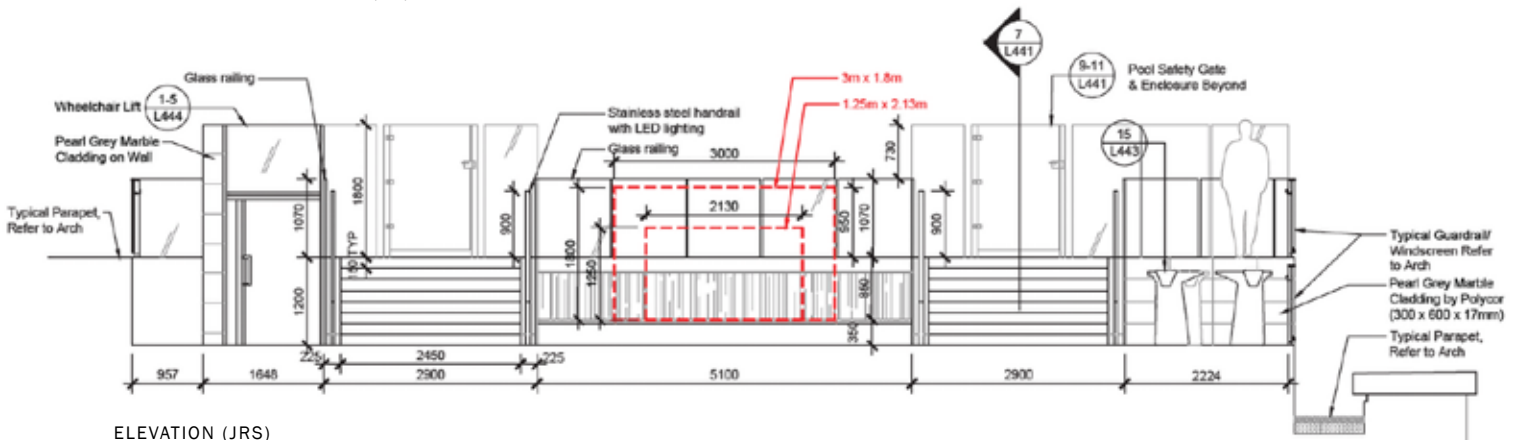
<< WITH YEAR-ROUND EXPOSURE to Toronto’s hot summer sun and cold winter freeze-ups, the commissioned work needed to be fabricated to survive the extreme elements and engineered to float effortlessly mere centimeters above the surface of the water feature.

Collaborative communication with JRS design leaders was critical to manage specifications and ever-shifting critical paths.>> TF



A PRELIM NAPKIN SKETCH (AG)

TERRACE SITE (FREED DEVELOPMENTS)



ELEVATION (JRS)

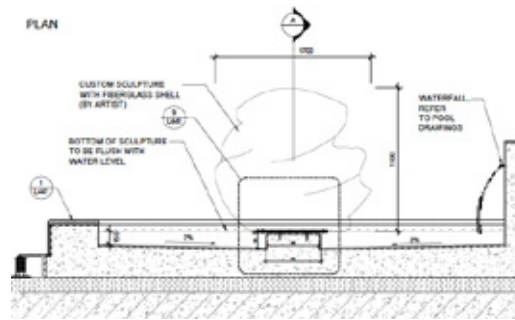
Sculpture models supporting the design aesthetic and technical needs of the site were suggested, and from those CLOUD was selected. Included in the artist overview were fabrication specifications for marine grade fiberglass, premium paints finishes and protective UV coatings. Weight of materials used was important in creating a substantial work that was easily wrangled for installation without the need of cranes or helicopters.



SURFACE FINISH TESTS

<< AN INNOVATIVE UNDERCARRIAGE of aluminum frame with connecting stainless steel plates was developed for installation to allow hidden under-pinning to the tight clearance of the site's concrete plinth.

While art and water do mix, this system allowed for the large sculpture to be easily detached should maintenance of the water feature be required in the future. >> TF



STEEL BASE PLATE



UNDER THE SUPERVISION OF TIM FORBES, fabrication from a hand-sized clay maquette to a large-scale work involved 3-d modeling, CNC carving of high density foam to create a layered form, and hand-finishing of complex curves before proceeding to fiberglass encasing.



THE PLUG CARVING



<< LIKE A LAMBORGHINI BODY, the surface finishing of this car-sized form had to be absolutely perfect as high-gloss fiberglass is unforgiving of lumps, bumps and flaws.>> TF



FORBES WITH CLOUD (JK)



INSTALLATION TEAM

THE BEST LAID PLANS: Commissioned in June 2018, sculpture delivery to the site was May 2019 – But with developer and design delays compounded by labor shut-downs due to COVID19, installation was delayed until March 2021. Completion of the terrace is scheduled for summer of 2021.



INSTALLATION PHOTOS: RICHARD KOEGL

Cloud—Just add water.